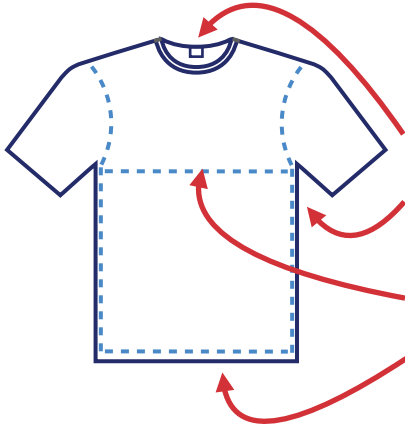




Hero Cape!

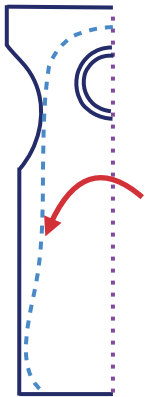
T-SHIRT CAPE



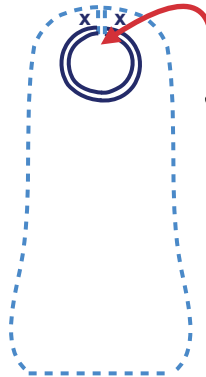
- Unfold and flatten an adult size t-shirt face up on your work surface.
- Cut out the tag from the t-shirt.
- Cut up the sides of the t-shirt to the armpit, separating the front from the back.
- Cut across the **FRONT ONLY** of the t-shirt from one armpit to the other.
- Cut off the bottom seam of the t-shirt and around the sleeves through both layers.

YOU WILL NEED:

- One Adult Size t-shirt
- Self-Sticking Velcro dots
- Scissors
- Chalk
- Decorative materials such as fabric paint, fabric pens, items to sew or glue on, felt, sequins, etc.



- Unfold what remains of the t-shirt and refold lengthwise so that the fold goes through the back of the shirt.
- Using chalk sketch out your cutting line in the shape of a cape.
- Cut out the shape, cutting through both layers.



- Cut the neckline in the front down the middle, attaching velcro dots to secure the closure.

KEY:

- natural fold line
- (re) fold line
- cut line

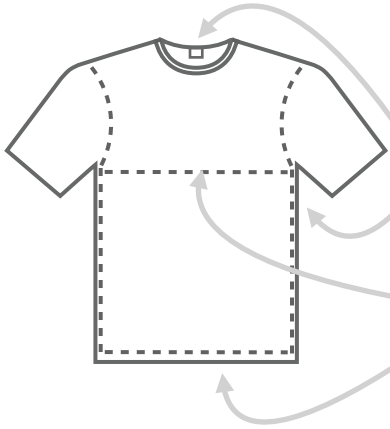
Find more games and activities at pbskids.org/heroelementary





Hero Cape!

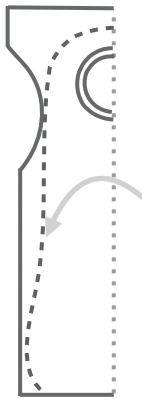
T-SHIRT CAPE



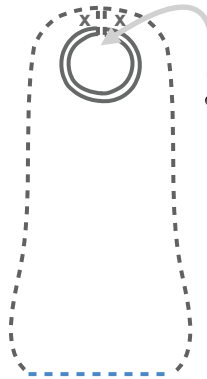
- Unfold and flatten an adult size t-shirt face up on your work surface.
- Cut out the tag from the t-shirt.
- Cut up the sides of the t-shirt to the armpit, separating the front from the back.
- Cut across the **FRONT ONLY** of the t-shirt from one armpit to the other.
- Cut off the bottom seam of the t-shirt and around the sleeves through both layers.

YOU WILL NEED:

- One Adult Size t-shirt
- Self-Sticking Velcro dots
- Scissors
- Chalk
- Decorative materials such as fabric paint, fabric pens, items to sew or glue on, felt, sequins, etc.



- Unfold what remains of the t-shirt and refold lengthwise so that the fold goes through the back of the shirt.
- Using chalk sketch out your cutting line in the shape of a cape.
- Cut out the shape, cutting through both layers.



- Cut the neckline in the front down the middle, attaching velcro dots to secure the closure.

KEY:

- natural fold line —————
- (re) fold line (dotted line)
- cut line - - - - - (dashed line)

Find more games and activities at pbskids.org/heroelementary

